

 **HUTH**™
Ben Pearson
INTERNATIONAL LLC

The Best Equipment, Tools and Service ...
for Tube Fabricators Around the World



PRODUCT LINES

TABLE OF CONTENTS

Huth Product Line: Pages 4-14

- Huth Benders..... pp. 4,5
- Huth Tooling pp. 6-10
- Huth Expanders pp. 11,12
- Huth Accessories, Add-Ons pp. 13,14

Ben Pearson Product Line: Pages 15-22

- Ben Pearson Benders..... pp. 15,16
- Ben Pearson Tooling pp. 17-20
- Ben Pearson Accessories, Add-Ons pp. 21

Exhaust Collectors, Custom Tooling and Machinery pp. 22



The Best Equipment, Tools and Service ... for Tube Fabricators Around the World

Since Gerry Huth developed the first automotive pipe bender in the 1950s, a lot has changed in the industry and with us. Today, people everywhere want to customize their cars and trucks, and find every possible performance advantage.

Our benders, expanders, swagers and tooling are allies that tube and pipe fabricators, in and out of automotive, have come to rely on. Huth, part of the Midas organization for decades, and Ben Pearson, who worked hand-in-hand with the leading exhaust shop chains, came together in 2008 to deliver the best in American made quality and innovation, supported by the highest level of customer service available anywhere.

Fabricators have found our equipment to be terrific for many other applications, from athletic equipment to fire systems to building frames to motorcycle and ATV parts to railing systems to satellite dish arms – the applications are almost endless!

Tube and pipe fabricators around the world recognize the value of Huth and Ben Pearson tooling and equipment. We work with many industry leaders ... our clientele rank among the top names in racing, fabrication and aerospace, experts in precision tube fabrication who know they can count on us.

Service and Quality Manufacturing

Made in the USA means we manufacture our products with American know-how, work ethic, innovation and values. Simply said, our products are the best.

Commitment to quality: We have a well-earned reputation for excellent quality and reliability in all our products, and we stand behind that reputation in our commitment to make it right for you.

Innovation, technical assistance and problem solving: We are committed to helping tube fabricators solve problems, do better work and be more successful. A real expert can help you any business day at 800-558-7808.

Commitment to service: It's about what you want, when you want it. We keep inventories of our most popular equipment and tools and can ship them to you NOW. Need custom machinery or tooling help? It may take a couple weeks, but we're on it!



HUTH BENDERS

Huth Tube and pipe benders

- The top of the line "ram-style" compression benders available anywhere.
- American made. Built by experienced masters.
- Rugged I-beam construction. ... Tough as hell. Lasts decades.

The HB-10: "The Full Package"

The best value in the market ... **Includes 028 Tooling Package (see pg 4)!**

- 5 HP motor gives 58,000 pounds of bending force, more than enough for 3 inch tubing
- Electrical knee control for hands-free operation
- Comes with comprehensive tooling package and instructional DVD
- Easy-To-Use Knee Pad Control
- Manual Depth-of-Bend Indicator
- Complete Manual Control
- 58,000 lbs of bending power - More than enough for 3" tubing
- Flat Tool Tray



All Huth Benders give you:

- Built in Heavy-Duty Swager/Expander gives you complete end-finishing capabilities - 1" to 3" tubing on the swager end and 1" to 5½" tubing on the expander end
- Rugged I-Beam construction
- A High Speed Option for 25% faster bending
- Exclusive Safety-Guard Package
- Front swivel casters
- 220V, 60 Hz Operation. Single-Phase requires 30 amp service. 3-Phase requires 20 amp service. (Other voltages and 50Hz available.)
- Bending Die Retainers

The "Heavy Duty" Model 2600 ... for BIG JOBS.

- 7.5 HP motor for 85,000 pounds of unmatched bending power
- Heavy steel reinforced framing
- Heavy duty gates and bushings
- Reinforced bending gates and frame
- Large volume reservoir
- Elevated center of bend
- Push button controls
- Easy-to-use knee control for forward/reverse
- Automatic depth-of-bend selector
- Bends schedule/thick wall pipe with ease



Visit www.huthbenders.com for our complete line of quality benders!

HUTH BENDERS

Huth's Remote Performance Bender (Model HRP-1620)

Operate bender away from the machine (when supporting a long tube)

Work more closely to the bend area. Simply move controls out of the way!

Built on the time-tested HB10/1600 platform

- 5 HP motor gives 58,000 pounds of bending force, more than enough for 3" tubing
- Heavy duty swager/expander for full end-finishing ability
- Expanding ability 1" to 5.5"
- Electrical knee control for hands-free operation

New pendant control station allows you to move while you work!



Tooling sold separately

The 2806 "Production Work-Horse"

- Automatic depth of bend indicator makes repeatable bends easy
- More control options with both push button and knee controls
- Easy-To-Use Knee Pad Control or Foot Pedal Control
- Push Button Control
- Automatic Depth-of-Bend Selector
- Complete Manual Control
- High Speed Option available
- 58,000 lbs Of Bending Power - More than enough for 3" tubing
- Heavy duty Hydraulic Cylinders
- Flat Tool Tray (2806 only)

... and the Sturdy 2008

Features listed at left (for 2806) plus:

- Swager Tray
- Auxiliary On/Off Switch
- Deluxe Tool Tray



Tooling sold separately



Pipe Bending for Thousands of Applications

The value of portable, affordable pipe benders was quickly evident when Huth first introduced them. With a Huth bender, it is not necessary to keep a variety of pre-bent pipes in inventory. With a few sizes of straight tubing on hand, you can quickly bend pipes for thousands of applications.

Today's Huth Benders are used in many more automotive and non-automotive applications than Gerry Huth ever dreamed! You will find our benders in shops working to make the fastest cars in the neighborhood, and building specialty equipment for cars and sporting goods. You'll find them in a wide variety of welding and fabrication shops, as well as manufacturing operations and prototyping facilities. Huth products are used in production for such products as furniture, car parts, hand railings and many other applications that require pipe bending and end finishing.

HUTH DIE PACKAGES

DIE PACKAGE

Radius Dies			010	011	013	028
No.	Radius	Size				
3112	3"	1½"		x	x	x
4112	4"	1½"	x		x	
5112*	5"	1½"			x	
3134	3"	1¾"		x	x	x
4134	4"	1¾"	x	x	x	
5134*	5"	1¾"			x	
3200	3"	2"	x	x	x	
4200	4"	2"	x	x	x	x
5200*	5"	2"	x	x		x
5820*	5"	2" 180°			x	
3414	3"	2¼"			x	
4414	4"	2¼"	x	x	x	x
5414*	5"	2¼"	x	x		x
5824*	5"	2¼" 180°			x	
4409	4"	2½"		x	x	
5412*	5"	2½"	x	x	x	x
5530*	5"	3"		x	x	x

*=requires 41041 retainer

Back Shoes (2 required)			010	011	013	028
No.	Pcs.	Size				
1112	2	1½"	x	x	x	x
1134	2	1¾"	x	x	x	x
1200	2	2"	x	x	x	x
4211	2	2¼"	x	x	x	x
4412	2	2½"	x	x	x	x
1350	2	3"		x	x	x

Three Quarter Shoes			010	011	013	028
No.	Size					
1036	1¾"				x	
1046	2"			x	x	
4413	2¼"			x	x	
4415	2½"				x	
1351	3"				x	

Half Shoes			010	011	013	028
No.	Size					
1038	1½"		x	x	x	x
1040	1¾"		x	x	x	x
1045	2"		x	x	x	x
4416	2¼"		x	x	x	x
4410	2½"		x	x	x	x
1352	3"				x	

Expander Segments			010	011	013	028
No.	Size					
472	1½" - 1¾"		x	x	x	x
474	1¾" - 2⅛"		x	x	x	x
475	2⅛" - 2½"		x	x	x	x
476	2½" - 3"		x	x	x	x

Flaring Tools			010	011	013	028
No.	Size					
518	2" Double Flare and 1½" Flat Flare			x		

Flaring Segment 45°			010	011	013	028
No.	Size					
440	1½" to 2½"				x	

Flaring/Flanging Tool			010	011	013	028
No.	Size					
853	1½" - 3½"		x	x	x	x

DIE PACKAGE

Collets (2 pieces included)		010	011	013	028
No.*	Size				
1712	1½"	x	x	x	x
1734	1¾"	x	x	x	x
1720	2"	x	x (DF)	x	x
1725	2¼"	x	x	x	x
1750	2½"	x	x	x	x
1730	3"			x	

Ball Joint Segments		010	011	013	028
No.	Size				
419	2"		x		
420	2¼"		x		
421	2½"		x		

Male Ball Joints		010	011	013	028
No.	Size				
550	1¾"			x	x
552	2"			x	x
553	2¼"			x	x
554	2½"			x	x

Female Ball Joints		010	011	013	028
No.	Size				
555	1¾" - 2"	x	x	x	x
556	2¼" - 2½"	x	x	x	x

Doming Dies		010	011	013	028
No.	Size				
557	1¾" to 2½"			x	x
558	2½" to 3¼"			x	x

Arbors (Solid Piece)		010	011	013	028
No.	Size				
572	1⅜" - 1¾"	x	x	x	x
573	1¾" to 4"	x	x	x	x

Swage Dies		010	011	013	028
No.	Size				
112	1½"		x	x	x
134	1¾"		x	x	x
178	1⅞"		x	x	
120	2"		x		
125	2¼"		x		
150	2½"		x		
130	3"			x	

*For 2", 2¼", 2½", 2¾" IDs, can use male ball joint tools 550,552,553, 554

Reducing Dies		010	011	013	028
No.	Size				
780	2" to 1¾"			x	
781	2¼" to 2"			x	
782	2½" to 2¼"			x	
783	3" to 2½"			x	

Accessories		010	011	013	028
No.	Size				
815	Die Holder	x		x	x
816	Die Holding Pin	x		x	x
825	Quick Disconnect kit		x	x	
835	Tube cutter	x	x	x	
852	Blank Plate			x	
855	Die Pins	x	x	x	x
870	O-Rings-Rubber Assist.			x	x
892	Collet Holder			x	
996	Rotation Dial		x	x	
980	Program card		x	x	

Die Packages

Huth has combined the tooling you'll be reaching for most often into comprehensive, convenient tooling "die packages".

We make these an unbelievable value for you, and they combine the tooling for bending and end-finishing with the accessories you need to get the most from your bender.

Some even include Huth's exclusive Program Card Bending System (H980), containing all the information you need to bend pipes for thousands of applications (1928 Model A's through 2001).

010 Die Package Tooling



011 Die Package Tooling



013 Die Package Tooling



028 Die Package Tooling



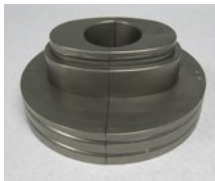
HUTH TOOLING: CUSTOM TOOLING AND TOOL PACKAGES

Custom Tooling

All Huth tooling is machined to specific tolerances from solid steel. After it is machined, it is gas-carburized and oil quenched to a minimum hardness of 58 Rockwell "C" scale. We do not use cast iron for any of our tooling.

Huth will manufacture tooling to your specifications for sizes not listed in this schedule. We count among our many custom tooling customers leaders in metal fabrication in the automotive, aerospace and manufacturing industries.

Call for details. 800-558-7808.



Tool Packages

Many of our operator customers have a narrower need than a comprehensive die package, but still appreciate a deal on multiple tool sets. We have combined the tools that go together for some of the industry's most important applications into affordable and convenient tool packages to make life easier and more profitable for you!



074 Die Package - Use with 1674 Expander Only		
No.	Type	Size
574*	Arbor	2 7/8" to 6"
572	Arbor	1 3/8" to 1 3/4" (Solid Piece)
573	Arbor	1 3/4" to 4" (Solid Piece)
472	Segment	1 1/2" to 1 3/4" (Solid Surface)
474	Segment	1 3/4" to 2 1/8"
475	Segment	2 1/8" to 2 1/2"
476	Segment	2 1/2" to 3"
481	Segment	2 7/8" to 3 1/2"
482	Segment	3 3/8" to 4"
483	Segment	3 7/8" to 4 1/2"
484	Segment	4 3/8" to 5"
485	Segment	4 7/8" to 5 1/2"
486	Segment	5 3/8" to 6"
O'Rings	O'Rings	Assorted
* All sizes are ID		

1988 3" End Finishing Package	
No.	Product Description
892	Collet Holder - 3"
1730	Collet - 3"
130	Swage Die - 3"
783	Reducer (3" to 2 1/2")
853	Flaring / Flanging Tool (1 1/2" to 3 1/2")

1992 3" Tooling Package	
No.	Product Description
5530	Radius Die - 3"
1350	Back Shoe (2) - 3"
1351	Three-Quarter Shoe - 3"
1352	Half Shoe - 3"
855	Die Pins (6)
892	Collet Holder - 3"
1730	Collet
853	Flaring/Flanging Tool 1 1/2" to 3 1/2"
783	Reducer (3" to 2 1/2")
130	Swage Die - 3"
476*	Segment Set (2 1/2" ID to 3" ID)
*Requires Arbor 508 and Arbor Tip 499 (or) Arbor 573	

1995 2 3/4" Tooling Package	
No.	Product Description
5534	5" Radius Die - 2 3/4"
1234	Back Shoe (2) - 2 3/4"
1235	Three-Quarter Shoe - 2 3/4"
1236	Half Shoe - 2 3/4"
855	Die Pins (6)
1729*	Collet - 2 3/4"
790	Reducer (3" to 2 3/4")
129	Swage Die - 2 3/4"
*Requires 892 Collet Holder	

1996 3" Short Tooling Package	
No.	Product Description
5530	5" Radius Die - 3"
1350	Back Shoe (2) - 3"
855	Die Pins (4)
Choice of one of the following:	
1351	Three-Quarter Shoe with Pin
1352	Half Shoe with Pin
476 *	Segment Set (2 1/2" ID to 3" ID)
*Requires Arbor 508 and Arbor Tip 499 (or) Arbor 573	

1997 2 3/4" Short Tooling Package	
No.	Product Description
5534	5" Radius Die - 2 3/4"
1234	Back Shoe (2) - 2 3/4"
855	Die Pins (4)
Choice of one of the following:	
1235	Three-Quarter Shoe with Pin
1236	Half Shoe with Pin
476 *	Segment Set (2 1/2" ID to 3" ID)
*Requires Arbor 508 and Arbor Tip 499 (or) Arbor 573	

HUTH TOOLING: BENDING DIES AND BACK SHOES

Bending Dies and Back Shoes

All Huth tooling is machined to specific tolerances from solid steel. After it is machined, it is gas-carburized and oil quenched to a minimum hardness of 58 Rockwell "C" scale. We do not use cast iron for any of our tooling. All Huth tooling is available from shelf stock. However, Huth will manufacture custom tooling to your specification for sizes not listed in this schedule.



Full Radius Dies		
	Full 5"	Full 4"
Size	No.	No.
1 1/2"	5812	
1 5/8"		4858
1 3/4"	5834	4834
1 7/8"	5878	
2"	5820	4820
2 1/4" **	5824	
2 1/2" **	5825	
	**4" Thick	

Regular Radius Dies			
	5"	4"	3"
SIZE	No.	No.	No.
1/2"		4012	3012
5/8"		4058	3058
3/4"	5034	4034	3034
0.840"			3084
7/8"		4078	3078
0.922"		4092	3092
1"	5100	4100	3100
1.050"	5105	4105	3105
1 1/8"	5118	4118	3118
1.163"	5116	4116	3116
1 1/4"	5114	4114	3114
1 5/16"	5056	4056	3056
1 3/8"	5138	4138	3138
1 1/2"	5112	4112	3112
1 5/8"	5158	4158	3158
1 3/4"	5134	4134	3134
1 7/8"	5178	4178	3178
2"	5200	4200	3200
2 1/8"***	5218	4218	3218
2 1/4"***	5414	4414	3414
2 3/8"***	5438	4438	3438
2 1/2"***	5412	4409	
3"***	5530		
	**4" Thick	**4" Thick	**4" Thick

Back Shoes (Full, Half, 3/4, 1/4)				
	Back Shoes	Half Shoes	Three-Quarter Shoes	Quarter Shoes
	(2 required)	(1 Required)	(1 Required)	(1 Required)
	*(2) 855 Pins Required Each	*(1) 855 Pin Required	*(1) 855 Pin Required	*(1) 855 Pin Required
SIZE*	No.	No.	No.	No.
1/2"	1012	1027		
5/8"	1058	1029		
3/4"	1034	1035		
0.840"	1840	1085		
7/8"	1078	1031		
0.922"	1092	1002		
1"	1100	1037		
1.050"	1105	1005		
1 1/8"	1118	1033		
1.163"	1116	1016		
1 1/4"	1114	1039		1084
1 5/16"	1256	1356		
1 3/8"	1138	1041		1083
1 1/2"	1112	1038		1082
1 5/8"	1158	1042		1081
1 3/4"	1134	1040	1036	
1 7/8"	1178	1043	1044	
2"	1200	1045	1046	
2 1/8"***	1218	1051	1053	
2 1/4"***	4211	4416	4413	
2 3/8" **	4237	4437		
2 1/2"***	4412	4410	4415	
2 3/4"***	1234	1236	1235	
2 7/8"***	1378	1379		
3"***	1350	1352	1351	
	**4" Thick	** 4" Thick	** 4" Thick	

**Need metric tooling?
We have it!**

Vintage tooling available!

**If you don't see it here,
Call us at 800-558-7808!**

Specialty Bending Dies and Back Shoes: For thousands of applications.

Controlled wrinkle dies for hard to bend metals like stainless steel, square dies to bend tough square tubing, and dies to bend flat stock ... Huth has the power, the tools and the know-how for what the fabricator needs to bend!

Controlled Wrinkle Dies



No.	DESCRIPTION	MODEL	No.	BACKSHOE SIZE (2 required)
3112W	3" RADIUS DIE, 1½"	ALL	1112	1½" **
4112W	4" RADIUS DIE, 1½"	ALL	1112	1½" **
5112W	5" RADIUS DIE, 1½"	ALL	1112	1½" **
5158W	5" RADIUS DIE, 1⅝"	ALL	1158	1⅝" **
3134W	3" RADIUS DIE, 1¾"	ALL	1134	1¾" **
4134W	4" RADIUS DIE, 1¾"	ALL	1134	1¾" **
5134W	5" RADIUS DIE, 1¾"	ALL	1134	1¾" **
3200W	3" RADIUS DIE, 2"	ALL	1200	2" **
4200W	4" RADIUS DIE, 2"	ALL	1200	2" **
5200W	5" RADIUS DIE, 2"	ALL	1200	2" **
4414W	4" RADIUS DIE, 2¼"	ALL	4211	2¼" **
5414W	5" RADIUS DIE, 2¼"	ALL	4211	2¼" **
4409W	4" RADIUS DIE, ½"	ALL	4412	2½" **
5412W	5" RADIUS DIE, 2½"	ALL	4412	2½" **
5534W	5" RADIUS DIE, 2¾"	ALL	1234	2¾" **
5578W	5" RADIUS DIE, 2⅞"	ALL	1378	2⅞" **
5530W	5" RADIUS DIE, 3"	ALL	1350	3" **
5531*	5" RADIUS DIE, 3"	2600	1350*	3" **

*Used on 2600 Heavy Duty Bender Only - Call for information regarding additional sizes and wrinkle dies best suited for your Model

Square Dies



No.	Radius	SIZE	No.	BACKSHOE SIZE (2 Required)
3334	3"	¾"	1000	¾" to 1½" *
4334	4"	¾"	1000	¾" to 1½" *
3310	3"	1"	1000	¾" to 1½" *
4310	4"	1"	1000	¾" to 1½" *
4314	4"	1¼"	1000	¾" to 1½" *
5314	5"	1¼"	1000	¾" to 1½" *
5312	5"	1½"	1000	¾" to 1½" *
5320	5"	2"	1020	2" *
5325	5"	2¼"	1025	2¼" *
5350	5"	2½"	1054	2½" *
5330*	5"	3" - 14 Ga	1030*	3" *

Flat Stock Bending Dies



No.	Radius	SIZE	No.	BACKSHOE SIZE
3303	3½"	Variable*	1003	Flat Stock Back Shoe (2 Req.)*
**(4) #855 Pins Required				

Rectangular 2" x 3"

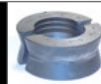
No.	Backshoe (2 req)	No.	Bending Die
1021	2" by 3" Easy way	5320	5" radius, 2" dia.
1022	2" by 3" Hard way	5322	5" radius, 3" dia.

Need to bend other sizes? Call 800-558-7808

End Finishing Swager Tooling

Clamp collets for a sure grip, swage dies to re-shape and expand tube ends, dies to reduce pipe for a handy slip-fit, and ball joint tools that can also flare or dome tube ends ... Huth tooling gives you the end finishing versatility you need.

Clamp Collets



No.	Size
1775	¾" EMT
1709	1" EMT
1710	1"
1718	1⅛"
1714	1¼"
1756	1⅝"
1738	1⅞"
1712	1½"
1758	1⅝"
1734	1¾"
1778	1⅞"
1720	2"
1720DF	2" Double Flare (Use with Part #518)
1728	2⅛"
1725	2¼"
1723	2⅜"
1750	2½"
1729	2¾" *
1731	2⅞" *
1730	3" *

*Requires 892 Collet Holder

For Clamp Collets Prior To 1985 call us at 800-558-7808

Swage Dies



No.	Size
110	1"
118	1⅛"
114	1¼"
138	1⅜"
112	1½"
158	1⅝"
134	1¾"
178	1⅞"
120	2"
128	2⅛"
125	2¼"
123	2⅜"
150	2½"
129	2¾"
130	3"

Header Collector Tool



No.	Size
101	3"
102	3½"

Reducing Dies*



*Require Collet holder 890, 891, or 892.

No.	Size
775	¾" EMT
779	1" EMT
780	2" to 1¾"
781	2¼" to 2"
782	2½" to 2¼"
783	3" to 2½"
784	2" to 1⅞"
785	1¾" to 1⅝"
786	1⅝" to 1½"
787	1½" to 1⅜"
788	1⅜" to 1¼"
789	1¼" to 1⅛"
790	3" to 2¾"

Flaring/Flanging Tools



No.	Size
518	Flare Tool - 2" Double Flare and 1½" Flat Flare*
519	Flare Tool - 1¾" and 1⅝" Double Flat Flare*
853	Pipe Flanger 1½" to 3" - (Replaces Pipe Flangers 848, 849, 850, 851)

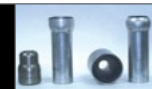
*NOT SHOWN

Ball Joint Tools - Female



No.	Size
555	1¾", 1⅞", 2" (Female)
556	2¼" to 2½" (Female)
564	2¾" to 3" (Female)

Ball Joint Tools - Male



No.	Size
550	1¾" (Male)
551	1⅞" (Male)
552	2" (Male)
553	2¼" (Male)
554	2½" (Male)
557	1¾" to 2½" (Domer)
558	2⅞" to 2¾" (Domer)

**Need Metric tooling?
We have it!
Call 800-558-7808
for details**



HUTH TOOLING: END FINISHING EXPANDER TOOLING



End Finishing Expander tooling creates the end finishes you need quickly.

All Huth tooling is machined to specific tolerances from solid steel. After it is machined, it is gas-carburized and oil quenched to a minimum hardness of 58 Rockwell "C" scale. We do not use cast iron for any of our tooling. All Huth tooling is available from shelf stock. However, Huth will manufacture custom tooling to your specification for sizes not listed in this schedule.

Arbors and Tips



Arbors	
No.	Description
572	Arbor, 1 ³ / ₈ " ID - 1 ³ / ₄ " ID, Solid Piece, (Same as #508 and #498 Combination)
573	Arbor, 1 ³ / ₄ " ID - 4" ID, Solid Piece, (Same as #508 and #499 Combination)
503	Arbor 2 ³ / ₄ " ID - 5 ¹ / ₂ " ID
574	Arbor 2 ⁷ / ₈ " ID - 6" ID (H1674 Model)

Arbors	
No.	Description
495	Arbor 1 ¹ / ₄ " - 1 ¹ / ₂ " (1680/1685 Models Only)
496	Small Arbor 1 ⁵ / ₁₆ " - 1 ¹ / ₄ " (1680 /1685 Models Only)
497	Small Arbor 1 ¹ / ₄ " - 4" (Requires 498 and 499 Tips) (1680/1685 Models Only)

Arbors and Tips	
No.	Description
575 / 570	Arbor 1 ⁵ / ₁₆ " - 1 ¹ / ₄ " ID with Spacer 570
508	Arbor 1 ³ / ₈ " ID - 4" ID
498	Small Arbor Tip - 1 ³ / ₈ " ID to 1 ³ / ₄ " ID
499	Large Arbor Tip - 1 ³ / ₄ " ID to 4" ID

Expanding Segment Tooling

Segments			
No.	Descrip.*	Finger No.	Comments
470	1 ⁵ / ₁₆ " - 1 ³ / ₃₂ "	670	Used with 575 with 570 Spacer or 496 Arbor
404	1 ³ / ₃₂ " - 1 ¹ / ₄ "	604	
400	1 ³ / ₁₆ " - 1 ¹ / ₂ "	600	Used with 500 or 495 Arbor
472	1 ³ / ₈ " - 1 ³ / ₄ "	672	Used with 572 Arbor or 508 Arbor+ 498 Tip
473	1 ³ / ₈ " - 1 ³ / ₄ "	673	
474	1 ³ / ₄ " - 2 ¹ / ₈ "	674	Used with 573 Arbor or 508 Arbor + 499 Tip
475	2 ¹ / ₈ " - 2 ¹ / ₂ "	675	Used with 573 Arbor or 508 Arbor + 499 Tip
476	2 ¹ / ₂ " - 3"	676	
477	3" - 3 ¹ / ₂ "	677	Used with 503 Arbor Requires 512 or 523 Adj Collar
478	3 ¹ / ₂ " - 4"	678	
403	2 ³ / ₄ " - 3 ¹ / ₈ "	603	Used with 503 Arbor Requires 512 or 523 Adj Collar
406	3 ¹ / ₈ " - 3 ¹ / ₂ "	606	
408	3 ¹ / ₂ " - 4"	608	
450	4" - 4 ⁷ / ₈ "	650	
451	4 ⁷ / ₈ " - 5 ¹ / ₂ "	651	

*All Sizes are IDs

1674 Segments			
No.	Descrip.*	Finger No.	Comments
481	2 ⁷ / ₈ " - 3 ¹ / ₂ "	681	Used with 574 Arbor (1674 Model Only)
482	3 ³ / ₈ " - 4"	682	
483	3 ⁷ / ₈ " - 4 ¹ / ₂ "	683	
484	4 ³ / ₈ " - 5"	684	
485	4 ⁷ / ₈ " - 5 ¹ / ₂ "	685	
486	5 ³ / ₈ " - 6"	686	

Flaring Segments			
No.	Descrip.*	Finger No.	Comments
405	1 ¹ / ₈ " - 1 ¹ / ₂ "	605	Used with 575 Arbor with 570 Spacer
440	1 ¹ / ₂ " - 2 ¹ / ₂ "	640	Used with 573 Arbor or 508 Arbor + 499 Tip
441	2 ¹ / ₂ " - 3 ¹ / ₂ "	641	

Ball Joint Segments			
No.	Descrip.*	Finger No.	Comments
410	1 ³ / ₄ " - 1 ⁷ / ₈ "	610	Used with 573 Arbor or 508 Arbor + 499 Tip
419	2"	619	
420	2 ¹ / ₄ "	620	
421	2 ¹ / ₂ "	621	
452	3"	652	
453	3 ¹ / ₂ "	653	Used with 503 Arbor (Requires 512 or 523)

V-Band Segment Set Tooling			
No.	Descrip.*	Finger No.	Comments
435	2"	635	Used with 573 Arbor or 508 Arbor + 499 Tip
436	2 ¹ / ₄ "	636	
437	2 ¹ / ₂ "	637	
438	2 ³ / ₄ "	638	
439	3"	639	

Bead Segments			
No.	Descrip.*	Finger No.	Comments
460	1 ¹ / ₄ "	660	Used with 575 Arbor and 570 Spacer
461	1 ¹ / ₂ "	661	Used with 500 Arbor
462	1 ³ / ₄ "	662	Used with 572 Arbor or 508 Arbor+ 498 Tip
463	2"	663	Used with 573 Arbor or 508 Arbor + 499 Tip
464	2 ¹ / ₄ "	664	
465	2 ¹ / ₂ "	665	
466	3"	666	
467	3 ¹ / ₂ "	667	
468	4"	668	

*Note: Original Tube Size

Flanging Segments			
No.	Descrip.*	Finger No.	Comments
411	1 ³ / ₄ "	611	Used with 573 Arbor or 508+ 499 Tip - 413 or 414 Required
413	2"		Ring - Use with 411
414	2 ¹ / ₄ "		
412	2 ¹ / ₂ "	612	Used with 573 Arbor or 508 + 499 Tip - 418 Required
418	2 ¹ / ₂ "		Ring - Use with 412

Vintage tooling available!

We want you to have what you need!

We are a leader in custom tooling! If you don't see it here, Call us at 800-558-7808!



EXPAND WITH HUTH!

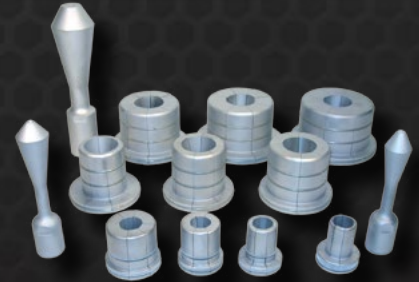


End finishing expanders and swagers help you raise your game

Swage or Expand Tubing anywhere with Huth's line of portable and workbench expanders.

Mounted on easy wheeling carts or compact stands, they help you form slip joints, flares and flat flares, ball joints, deep swage expansions and reductions.

- Flexible, creative, affordable tube connecting
- Easy to use! Huth's Accu-Sizer™ system for quick, precise expanding every time.
- Sturdy, well thought out, with built-in tool trays for easy access to tooling.
- 25,000 to 49,000 lbs of expanding power.



Model 1673: Portable Expander- Swager Expands and Reduces Pipe Diameter



Model 1674: Portable Expander with Two Powerful Cylinders



1673 Powerful Swager/Expander Features:

Swage box allows reductions up to 3 inch and solid tool expansions.

- A powerful 5 HP motor, single-phase (30 amp), or 3-phase (20 amp)
- Runs on 220 volt, 60 Hz supply. 50 Hz and other voltages available
- The 3½" cylinder produces 25,000 lbs. of expanding power
- Expanding capacity from 1" to 5½"
- Features Huth's Accu-Sizer™ automatic, preset expanding system for quick, precise expanding each and every time
- Adjustable Collar (41047) for expanding 1" to 3½"
- Collet Holder for 1" to 2½" O.D. tubing
- Swaging capacity from 1" to 3"
- "See-through" safety guards for increased protection during all operations
- Front swivel caster w/brake
- 15' power cord with male and female receptacles

The 1674 Dual Head Expander Features:

Now with the powerful 5" cylinder you can expand tubing from 3" up to, and larger than 6" diameter, 3" deep (5" deep tooling also available).

- Powerful 5 HP motor, single-phase (30 amp), or 3-phase (20 amp)
- Runs on 220 volt, 60 Hz supply. 50 Hz and other voltages available
- The 3½" cylinder produces 25,000 lbs. of expanding power and the 5" cylinder produces 49,000 lbs. of expanding power
- Expanding capacity from 1" to 6" and greater
- Features Huth's Accu-Sizer™ automatic, preset expanding system for quick, precise expanding each and every time
- Front swivel caster w/brake
- 15' power cord with male and female receptacles
- Includes 41047 Accu - Sizer adjustable collar for the 3-1/2" cylinder, and the 527 adjustable collar with the 528 collar extension for the 5" cylinder

Tooling sold separately



EXPAND WITH HUTH!

Bench-top and Portable Expanders quickly and easily size tube and pipe ends, anywhere! Auto stores, warehouses, fab shops and production settings.

1690 Bench Top Expander

1691 Portable Expander

1690 and 1691 Features



- Compact design fits on your bench-top (12" x 20" x 24")
- 10 ft. power cord with male and female receptacles



- Compact 24" x 23" x 39" design on rugged cart for maximum portability
- 15 ft. power cord with male and female receptacles

- Hands-free operation with foot pedal activation
- Create custom brackets with Rod Bracket Bender (Part 985)(optional)
- Standard expanding capacity from 1½" to 3½"
- Expanding capacity from 1" to 5½" with additional tooling
- Powerful 2 HP motor available in 110V, 30 Amp or 220V, 20 Amp. Motor runs on both 50Hz and 60Hz
- 25,000 lbs of expanding power
- Features Huth's Accu-Sizer™ automatic, preset expanding system for quick, precise expanding each and every time
- Built-in tool tray for easy access to tooling
- "See-through" safety guards for increased protection during all operations
- Includes: 572, 573 Arbors and 472, 474, 475, 476, 477 Segment Sets

1685S Mitey Mate Jr Expander... Now with 3" tooling included, gives you 17000 lbs of expanding force right in your hand. Now CE listed!



Small but powerful, the Mitey Mate Jr expander is ideal for making flares*, ball joints†, and slip connections wherever you need to work ... under a vehicle, in a work cell or on the bench.

- Set to operate at 3200 psi (shop air pressure between 80 and 120 psi maximum**)
- 1½" to 3" I.D. mufflers and pipes (3½"-4" capability with additional tooling)
- Comes with Huth's unique Accu-Sizer™ System for right-on expansions, job after job
- Expander weighs only 7 pounds
- All three pieces together weigh only 34 pounds
- Handy storage unit holds the expander, four segment sets and one of the two detachable arbor tips, is 9" high by 10½" square
- Power pedal is only 8" high, 10" long and 5" wide, and fits under the storage unit

*Requires use of No. 440 flaring segment

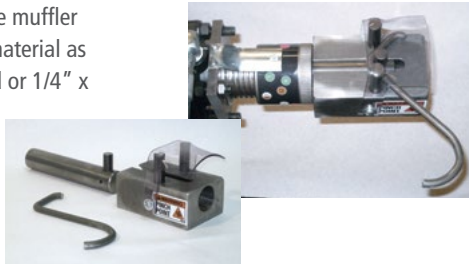
**Air regulator included in package

†Requires use of ball joint segment tools



Save Money! Bend your own Brackets. Rod Bracket Bender Part No. 985

You can quickly produce muffler hanger brackets from material as large as 1/2" dia. round or 1/4" x 1" flat.



Ready Rak II™ Part No. 91176

Large rack ... Ideal for 3" tooling
25 1/4" x 5"
17 Slots
7 Trays (5" Deep)
Shown with 825 Quick Disconnect Tooling (Optional)



Changing End-Finishing Tools is Fast and Simple with Quick Disconnect Kit Part No. 825

The holder (Part Number 818) threads into the swager cylinder shaft of the bender, and the 10 threaded shoulder studs (Part Number 823) screw into your end-finishing tools. Non-threaded adapter (Part Number 820) works with all non-threaded tooling.



Grommet Grabber Part No. 987

is designed to remove hanger brackets from their rubber mounting grommets with a squeeze of the handles



Exhaust Pipe Shapers

Repairs dented and damaged pipe ends or muffler inlets and outlets. Heat treated for durability.

For use on pipe up to 3" dia. part number 984.

For 2" to 5" dia. pipe part number 982.



Muffler Stand Part No. 986

Safely supports exhaust components during installation, the Exhaust Support Stand measures 47" and extends to 79". The unit has an oversized support tray and rotates 360°. The spring loaded, quick-release extension mechanism is also self-locking.

Part No. 986.
(70 lb. Maximum Capacity)



A-Train Part No. 6006

Keeps tools at eye level for easy access, the A-Train has 8 large shelves (4 on each side) and can hold everything from radius dies to ball joint tools.

52" high, 38" long and 36" wide at the base. Made from heavy-duty angle iron, also has industrial strength swivel casters.



Header Flange Tooling

Huth now has arbors and segment sets to form shapes and sizes to match manifold flanges for your header construction. We have several sizes in stock and can custom build to your needs. This tooling will fit any of the Huth benders or expanders.



- H594 Arbor, Flange 1" x 14 Thread (All Machines Except 1685)
- H494 Arbor, Flange, 1685
- H360 Segment, Flange Header 1-3/4 x .049, 4-V
- H361 Segment, Flange Header 1-3/4 x .049, 5.7
- H362 Segment, Flange Header 1-7/8 x .049, C-7
- H363 Segment, Flange Header 1-7/8 x .049, 6.1

Double the expanding set-up of your Bender! Expander Option Kit Part No. 92222/92225

The 2nd cylinder allows two different expanding systems always available and ready to use, reducing changeover time.

Kit 92222 allows for addition of expanding from 1" to 5½" by 2" deep. Or choose to install the Rod Bracket Bender (#H985) on the new cylinder and create hangers and brackets in seconds.



Kit 92225 allows for expanding from 3" to 5" by 3" deep. Arbor 574 included.

More Accurate End-Finishing with Huth's Accu-Sizer™. Now with metric and imperial measurements! Part No. 1986 (3" Swager Cylinders) or Part No. 1990 (3 1/2" Swager Cylinders)

Huth's Accu-Sizer™ preset expanding system, standard on all new Huth Benders, is available as a retrofit kit for benders built before August of 1988, which have a 3" swager cylinder.

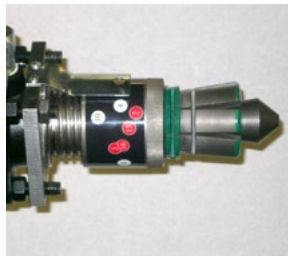
Accu-Sizer features:

- Accurate bull's-eye adjustments for precise expansions time after time

Consists of:

- No. Description
- 572 Arbor 1½" to 1¾"
- 573 Arbor 1¾" to 3½"
- 472 Segment 1½" to 1¾"
- 474 Segment 1¾" to 2½"
- 475 Segment 2½" to 2½"
- 513 Snap Ring Nut
- 514 Snap Ring
- 515 Set Screw
- 522 Adjustable Collar
- 595 Gun Sight
- 98042 Sizing Decal
- 98043 Calibration Decal
- 97240 Machine Screw (2)

- Installation, calibration instructions.
- Model 1986 - for 3" Swager Cylinders
- Model 1990 - for 3½" Swager Cylinders



Bring Huth Quality Tooling to Your "Other Brand" Bender. Now all Huth tooling (except collets) is adaptable to other brand benders. All Huth arbors, segments and swage tooling will attach to the 1" 14-thread shaft without modification. Huth back shoes and dies also mount on the swing gates without modification. **Call 800-558-7808 for instructions and adapters for mounting Huth bending dies to the other brand sleds.**

Top Tray Part No. 81013

Easy to snap-on, this tray helps you organize your tooling where it is easy to access, on top of your bender!



Tube Cutter #30 for 3" Part No. 835

Simple, easy to use tube cutter cuts any tube up to 3" diameter



Rotation Dial

Part No. 996 Clockwise

Part No. 976cc Counter-clockwise



O Ring Kits 870 (Rubber) and 859 (Steel)



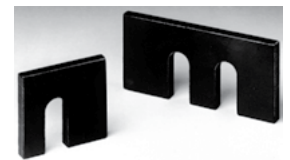
(10 ea, 50 total pieces)



(5 ea, 25 total pieces)

Tough, Close Bends Faster, Easier And Better

Simple, slip-in spacers nearly duplicate the action of the cutout gates by moving the back shoes and the pipe farther from the gates during bending operations.



1080 Half Shoe on Left,
1079 Full Shoe on Right

Space Makers help you contend with that second close bend with ease and without any die interference (provided bending radius does not exceed 4"). You can use these spacers with a half shoe and a full shoe in any tube diameter. Plus, you can substitute a three-quarter shoe for the half-shoe.

Huth Bender Training DVD

Designed to reduce training time for new technicians, this 42-minute bender training DVD includes clear visual instruction to reduce mistakes. Order Part Number 97305.



Huth's Program Cards

More than 7,500 strong...Huth's program cards enable even the beginning installer to start with a stick of tubing and end up with an OE-fit pipe. Model A through 2001.

Part Number 980 (electronic format). Includes catalog.



BEN PEARSON BENDERS

The Power of Pearson

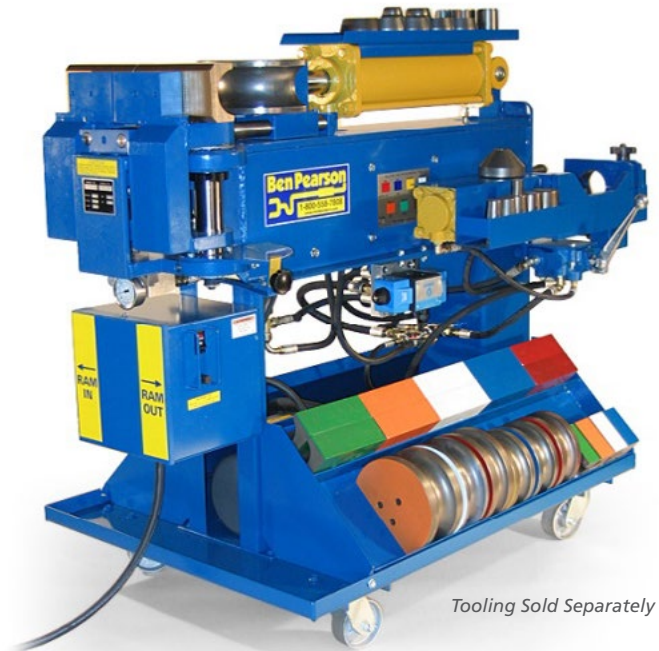
When Ben Pearson teamed up with Huth in 2008, two premier innovators in bending with a similar philosophy of "It's all about the customer" came together.

Ben Pearson benders brought innovative features that shop owners wanted, a longer stroke main cylinder, a 2nd expanding cylinder, and 180 degree bends on a 5" radius die and quick-change tooling. Now teamed with Huth, you get the best in engineering, innovation and customer service!

MC-59: The Bending Workhorse

With 2 separate cylinders for end finishing!

- Bend depth to 180° on a 5" radius
- Unique die design eliminates possibility of radius die locking behind back shoe
- Bending capability through 3"
- Quick-change dies
- Color-coded dies
- Spring loaded die carriage
- Knee control of ram die
- Energy efficient dual stage hydraulic pump
- Automatic depth-of-bend
- Automatic retraction of ram die
- Automatic motor cut-off
 - Single phase req. 30 amp service
 - Three phase req. 20 amp service
 - 50 cycle and other voltages available
- Heavy-duty 4 HP motor



Tooling Sold Separately

180° Bend on a 5" radius

With the Ben Pearson pipe bender you'll get a perfect 180° bend on a 5" radius die (our 3" and 4" ram dies also make perfect bends possible even at maximum bend). What you won't get is a pipe that is crimped or collapsed. The reason for this is very simple-Ben Pearson's unique die construction eliminates the problem of the pipe locking on the die. This extra feature saves you time and money.

Longer Stroke Main Cylinder

We've added an extra 3" stroke to the main cylinder. You get an extra 6" of space between the edge of the ram die and the edges of the back shoes. You have more room to feed pipe through the machine, thus eliminating the need for cumbersome and time consuming pusher blocks.

The MC-59 Offers Two Separate End Finishing Systems

To make your job easier, faster and more efficient, the MC-59 offers two end-of-pipe systems as standard equipment. The segment expander is easier to operate close to the end of the pipe. Plus, the unique bull's eye gauge, with an accurate and complete O.D. and I.D. setting chart, ensures accurate connections and slip fits. The clamp-down swager system operates on a separate cylinder and gives you the flexibility to swage, flare, ball joint, reduce and flange. In fact, you name the job that needs to be done and this machine can do it.

**Need Highest speed? Order the Ultimate In Bending Technology
MC59 HI SPEED (MC-59HS). Twice the bending speed of conventional benders!**

- Rugged 7-1/2 HP motor
 - Heavy-duty electrical and hydraulic system
 - Hydraulic oil cooler with extra capacity hydraulic reservoir
- Plus all the best features of the powerful MC59



3012 Fabricator's dream bending machine makes 360 degree bends!

Now tube fabricators have more bending capabilities than ever!

- Completely bend around dies on same centerline
- Uses BEN PEARSON TOOLING
- Easy-to-use manual knee pedal control
- Push button control
- Automatic depth-of-end selector
- 58,000 lbs of bending force - more than enough for 3" tubing
- Agricultural main cylinder
- Deluxe tool tray
- Heavy duty swager/expander
- Rugged I-Beam construction
- Front swivel casters
- 220 volt, 60HZ operation
 - Single phase req. 30 amp service
 - Three phase req. 20 amp service
- High voltage and high speed options available
- Tooling Sold Separately



BP-08 Manual Bender

Manually operated bender using the knee control for bending

- I-Beam construction with the maintenance free guide plate
- Sleek design main frame provides maximum clearance for hard to bend tubes and pipes
- Uses double-ended cylinder for both solid and segmented end finishing
- Features Ben Pearson quick disconnect end finishing tooling
- 5-HP motor
- Manual operated knee pad
- Tooling Sold Separately



BPC-09 Complete Package with BP-08 and Super 110 Tool Package



BP-11 Automatic or Manual

Depth of bend to make repeated bends

Features: Same Frame as BP-08

- Automatic and Manual depth-of-bend selector
- Easy to use knee pad control
- Push button control
- Auxiliary stop-start at swager/expander
- Deluxe die tray
- Sleek-designed main frame provides maximum clearance for hard-to-bend pipes or when using bend data
- Designed to accommodate Ben Pearson bending dies and end-finishing tooling
- Uses a double-ended cylinder for both solid and segmented end finishing
- Easy toggle clamp design for clamping collets
- Features Ben Pearson quick-disconnect end-finishing tooling
- Powered by a 5-HP motor
- Tooling sold separately



BEN PEARSON DIE PACKAGES

DIE PACKAGE SUPER

Radius Dies			110	120	120-7	150
No.	Radius	Size				
60221	3"	1½"	x	x	x	x
60222	4"	1½"				x
60225	3"	1¾"	x	x	x	x
60226	4"	1¾"		x	x	x
60230	3"	1⅞"				x
60231	4"	1⅞"		x		x
60232	5"	1⅞"				x
60235	3"	2"		x	x	x
60236	4"	2"	x	x	x	x
60237	5"	2"		x	x	x
60240	3"	2¼"				x
60241	4"	2¼"	x	x	x	x
60242	5"	2¼"	x	x	x	x
60245	4"	2½"		x	x	x
60246	5"	2½"	x	x	x	x
62999	5"	3"	x			
Back Shoes (2 required)			110	120	120-7	150
No.	Pcs.	Size				
61000	2	1½"	x	x	x	x
61001	2	1¾"	x	x	x	x
61002	2	1⅞"		x	x	x
61003	2	2"	x	x	x	x
61004	2	2¼"	x	x	x	x
61005	2	2½"	x	x	x	x
63000	2	3"	x			
Three Quarter Shoes			110	120	120-7	150
No.	Size					
61011	2"		x	x	x	x
61012	2¼"		x	x	x	x
Half Shoes			110	120	120-7	150
No.	Size					
61014	1½"		x	x	x	x
61015	1¾"		x	x	x	x
61016	1⅞"			x		x
61017	2"		x	x	x	x
61018	2¼"		x	x	x	x
61019	2½"		x	x	x	x
Expander Segments			110	120	120-7	150
No.	Size					
61967	1½" - 1⅝"		x	x	x	x
61548	1¾" - 2"		x	x	x	x
61549	2⅛" - 2½"		x	x	x	x
61550	2⅜" - 3"		x			
Flare Segment 45°			110	120	120-7	150
No.	Size					
62995 (Supercedes #61542, 61778)	1½" - 2½"					x
Buick Ball Tools (segment)			110	120	120-7	150
No.	Size					
61544	2"			x	x	x
61545	2¼"			x	x	x
61546	2½"			x	x	x
Female Ball Joints			110	120	120-7	150
No.	Size					
555 (Supercedes #60780)	1¾" - 2"		x	x	x	x
556 (Supercedes #60779)	2¼" - 2½"		x	x	x	x
Collets (2 required)			110	120	120-7	150
No.*	Size					
61430	1½"		x	x	x	x
61428	1¾"		x	x	x	x
61427	1⅞"			x		x
61426	2"		x	x	x	x
61424	2¼"		x	x	x	x
61423	2½"		x	x	x	x
*All Product Numbers Include a Set of 2 Pieces						
Swager Assembly			110	120	120-7	150
No.	Size					
61241	1½"		x	x	x	x
61237	1¾"		x	x	x	x
61235	1⅞"			x		x
61233	2"		x	x	x	x
61231	2¼"		x	x	x	x
61229	2½"		x	x	x	x
Solid Die Flare Pipe Flanger			110	120	120-7	150
No.	Size					
853 (Supercedes #61049)	45/90 Flare 1½" - 3½"		x	x	x	x
Super Flange Assembly			110	120	120-7	150
No.	Size					
61258	1½" - 2"			x	x	x
61841	O-Ring Kit		x	x	x	x

62898 Super 110 Die Package



62140 Super 120 Die Package



62141 Super 120-7 Die Package

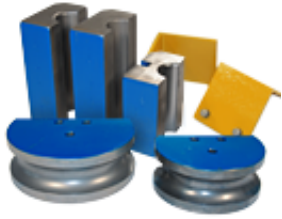


62213 Super 150 Die Package



Tool Packages

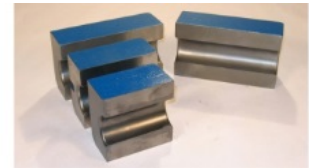
For your convenience, we have combined the tools that go together for some of the industry's most important applications into affordable and convenient tool packages to make life easier and more profitable for you.



62180 TD2 2-3/4" Die Set	
Included Parts	
No.	Description
61121	5" Radius Die
61122	2 3/4" Back Shoes (2)

61120 TD3 3" Die Set	
Included Parts	
No.	Description
62999	5" Radius Die
63000	3" Back Shoes (2)
61550	Expander 2 7/8" to 3"

62245 TS3 3" Swager Set	
Included Parts	
No.	Description
62231	Swager Assembly 3"
62227	Collet 3" (Qty. 2)
62233	Reducer Assembly 2 3/4" to 2 1/2"
62232	Reducer Assembly 3" to 2 3/4"



Bending Dies and Back Shoes

Operator convenience is the name of the game in the fabrication and exhaust industries. The quicker the job, the more profit you can make. At Huth-Ben Pearson we know this, and that's why we designed our quick-change dies for maximum speed and versatility. You won't find any bolts, pins or pusher blocks. Its quick and easy with Ben Pearson tooling.

Bending (Radius) Dies			
	3" Radius	4" Radius	5" Radius
SIZE	No.	No.	No.
3/4"	62746	N/A	N/A
1"	62259	N/A	N/A
1 1/8"	63118	N/A	N/A
1 1/4"	60876	N/A	63876
1 5/16"	N/A	63156	N/A
1 3/8"	60877	61260	N/A
1 1/2"	60221	60222	61082
1 5/8"	61044	60878	61083
1 3/4"	60225	60226	60227
1 7/8"	60230	60231	60232
2"	60235	60236	60237
2 1/8"	61084	61085	61062
2 1/4"	60240	60241	60242
2 3/8"	N/A	61114	61115
2 1/2"	N/A	60245	60246
2 3/4"	N/A	N/A	61121
3"	N/A	N/A	62999

Back Shoes			
	Back Shoes (2 required)	Half Shoes	3/4 Shoes
SIZE	No.	No.	No.
3/4"	62744	N/A	N/A
1"	62260	62602	N/A
1 1/8"	64118	N/A	N/A
1 1/4"	61107	61108	61879
1 3/8"	61109	61110	61880
1 1/2"	61000	61014	61008
1 5/16"	64156	N/A	N/A
1 5/8"	61111	61112	61045
1 3/4"	61001	61015	61009
1 7/8"	61002	61016	61010
2"	61003	61017	61011
2 1/8"	61086	61087	61783
2 1/4"	61004	61018	61012
2 3/8"	61116	61117	61784
2 1/2"	61005	61019	61013
2 3/4"	61122	61123	62011
3"	63000	62658	62449

Bending Square

Bending square tubing is a favorite of metal fabricators due to its strength in construction. Ben Pearson benders handle this easily, with special square tooling.

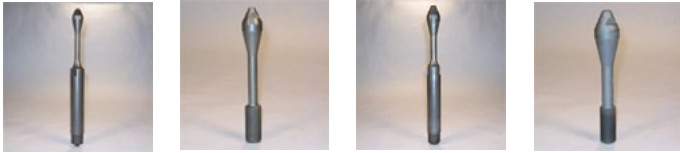


Dies and Back Shoes for Bending Square Tube					
SQUARE DIES			BACK SHOES (2 Required)		
No.	Radius	SIZE	No.	CORRESPONDING SIZE	
63334	4"	3/4"	64034	3/4"	
63310	4"	1"	64010	1"	
63314	5"	1 1/4"	64014	1 1/4"	
63312	5"	1 1/2"	64012	1 1/2"	
63320	5"	2"	64020	2"	
63325	5"	2 1/4"	64025	2 1/4"	
63350	5"	2 1/2"	64054	2 1/2"	
*Custom Sizes Available Upon Request. Send Us Your Material for a Sample of What Can Be Done			75000	Square Back Shoe Retainer (Optional But Suggested)	



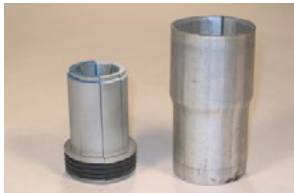
End Finishing Expander Tooling

Create expansions, ball joints, flares and beads with ease. All Ben Pearson tooling is machined to specific tolerances from solid steel. After it is machined, it is gas-carburized and oil quenched to a minimum hardness specified to the tool type. We do not use cast iron for any of our tooling. All Huth-Ben Pearson tooling is available from shelf stock.



Arbors and Bolts

No.	Description
61261	Small Arbor Bolt (MC and MC-HS Models Only)
62659	Small Arbor Bolt (BP and MB Models Only)
60356	Arbor 1 1/2" (MC and MC-HS Models Only)
62059	Arbor 1 1/2" (BP and MB Models Only)



Bead Segments

No.	SIZE*	COMMENTS	FINGER No.
461	1 1/2"	Used with 61262 or 62659 with 570 Spacer	661
462	1 3/4"	Used with 60356 or 62059	662
463	2"	Used with 60356 or 62059	663
464	2 1/4"	Used with 60356 or 62059	664
465	2 1/2"	Used with 60356 or 62059	665
466	3"	Used with 60356 or 62059	666
467	3 1/2"	Used with 60356 or 62059	667
468	4"	Used with 60356 or 62059	668

*Original Tube Size

Segmented Expanders

No.	SIZE	COMMENTS	FINGER No.
61046	1 1/4" - 1 3/8"	Use with Arbor 61261 (MC-59) or 62659 (All Other Models)	61060
61967	1 1/2" - 1 5/8"	Use with Arbor 60356 (MC-59) or 62059 (All Other Models) Red	61968
61548	1 3/4" - 2"	Use with Arbor 60356 (MC-59) or 62059 (All Other Models) White	61758
61549	2 1/8" - 2 1/2"	Use with Arbor 60356 (MC-59) or 62059 (All Other Models) Orange	61777
61550	2 5/8" - 3"	Use with Arbor 60356 (MC-59) or 62059 (All Other Models) Gold	61759
62452	3 1/8" - 3 1/2"	Use with Arbor 60356 (MC-59) or 62059 (All Other Models)	62489
62453	3 5/8" - 4"	Use with Arbor 60356 (MC-59) or 62059 (All Other Models)	62492



Segmented Combination Ball Tools Male/Female

No.	SIZE	COMMENTS	FINGER No.
61544	2"	Use with Arbor 60356 (MC-59) or 62059 (All Other Models)	61754
61545	2 1/4"	Use with Arbor 60356 (MC-59) or 62059 (All Other Models)	61755
61546	2 1/2"	Use with Arbor 60356 (MC-59) or 62059 (All Other Models)	61756
71301	3"	Use with Arbor 60356 (MC-59) or 62059 (All Other Models)	71302

*Original Tube Size

Chevrolet Flange Segment Tool

No.	SIZE*	COMMENTS	FINGER No.
60857	2"	Use with Arbor 60356 (MC-59) or 62059 (All Other Models)	60905
60867	2 1/4"	Use with Arbor 60356 (MC-59) or 62059 (All Other Models)	60906

*Original Tube Size



Segmented 45 Degree Flare

No.	SIZE	COMMENTS	FINGER No.
62995	1 1/2" - 2 1/2"	Use with Arbor 60356 (MC-59) or 62059 (All Other Models)	62996
71551	2 1/2" - 3 1/2"	Use with Arbor 60356 (MC-59) or 62059 (All Other Models)	71552

NOTE: 60447 Superseded by 71551



End Finishing Swager Tooling

End shaping and swaging is made simple with our high-quality tooling. All tooling is machined to specific tolerances from solid steel., then gas-carburized and oil quenched to a minimum hardness specified to the tool type. All listed tooling is available from stock. We will manufacture custom tooling to your specification for sizes not listed.



Swagers	
No.	SIZE
61245	1¼"
61243	1⅜"
61241	1½"
61239	1⅝"
61237	1¾"
61235	1⅞"
61233	2"
61506	2⅛"
61231	2¼"
61750	2⅜"
61229	2½"
62720	2¾"
62231	3"

Reducers	
No.	SIZE
62233	2¾" to 2½"
62232	3" to 2¾"
61250	2½" to 2¼"
61252	2¼" to 2"
61254	2¼" to 1⅞"
62212	2" to 1¾"
62160	1¾" to 1⅝"

Collets (2 required)	
No.	SIZE
61342	1¼"
61431	1⅜"
61430	1½"
61429	1⅝"
61428	1¾"
61427	1⅞"
61426	2"
61425	2⅛"
61424	2¼"
61752	2⅜"
61423	2½"
62673	2¾"
62227	3"

Female Ball Joints	
No.	SIZE
555	1¾" to 2" (Supersedes 60780)
556	2¼" to 2½" (Supersedes 60779)
71301	3"



Header Collector Tool	
No.	Description
62216	Header Collector for All Sizes

Super Flange	
No.	SIZE
61258	1½" and 2"
61792	1¾" and 2¼"

Solid Die Flare	
No.	SIZE
853	45° and 90° (Supersedes 61049)

We want you to have what you need!

We are a leader in custom tooling!

Call us at 800-558-7808 !

ACCESSORIES AND ADD ONS

Rod Bracket Bender Attachment (Except MC-59) Part No. 75985



Bending Card Data DVD with Catalog Part No. 980



Swage Adaptor: Quick Disconnect Part No. 61247



Rotation Dial Part No. 60100



1685S Mitey Mate Jr Expander... Now with 3" tooling included, gives you 17000 lbs of expanding force right in your hand. Now CE listed!



Small but powerful, the Mitey Mate Jr expander is ideal for making flares*, ball jointst, and slip connections wherever you need to work ... under a vehicle, in a work cell or on the bench.

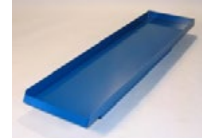
- Set to operate at 3200 psi (shop air pressure between 80 and 120 psi maximum**)
- 1½" to 3" I.D. mufflers and pipes (3½"-4" capability with additional tooling)
- Comes with Huth's unique Accu-Sizer™ System for right-on expansions, job after job
- Expander weighs only 7 pounds
- All three pieces together weigh only 34 pounds
- Handy storage unit holds the expander, four segment sets and one of the two detachable arbor tips, is 9" high by 10½" square
- Power pedal is only 8" high, 10" long and 5" wide, and fits under the storage unit

*Requires use of No. 440 flaring segment

**Air regulator included in package

tRequires use of ball joint segment tools

Tooling Tray for MC-59 Part No. 62157



Top Tray for BPC-09/BP-08 Part No. 81013

Easy to snap-on, this tray helps you organize your tooling where it is easy to access, on top of your bender!



Muffler Stand Part No. 986

(70 lb. Maximum Capacity) Safely supports exhaust components during installation. Measures 47" and extends to 79". The unit has an oversized support tray and rotates 360°, has self-locking spring loaded, quick-release extension mechanism.



Exhaust Pipe Shapers

Repairs dented and damaged pipe ends or muffler inlets and outlets. Heat treated for durability.

For use on pipe up to 3" dia. Part No. 984.

For 2" to 5" dia. pipe Part No. 982.



A-Train Utility Tool Holder Cart Part No. 6006

52" high, 38" long and 36" wide at the base. Made from heavy-duty angle iron, also has industrial strength swivel casters.



Tube Cutter #30 for 3" Part No. 835

Simple, easy to use tube cutter cuts any tube up to 3" diameter.



Reed Tube Cutter Part No. 62667

Features a Quick release/advance button for quick and easy re-sizing of tube diameters from 3/8" – 3½" or manual ball wheel turn knob adjustments and tightening during cutting process.



O Ring Kits 870 (Rubber) and 859 (Steel)



(10 ea, 50 total pieces)



(5 ea, 25 total pieces)

Copyright 2015, Huth Ben Pearson International LLC



Custom Tooling and Machinery

Our development team devises tooling and equipment custom to your tube fabrication needs. Our clientele rank among the top names in racing, fabrication and aerospace, experts in precision tube fabrication who know they can count on us.



Exhaust Collectors

Available in 304 Stainless Steel and Aluminized, our formed collectors are considered to be the best in the business, avoiding unnecessary welds to maximize performance AND keep costs down. We offer a full line of collectors engineered to meet your custom specs, from high performance street racer to professional stock car racer.



4 into 1's

3 into 1's

2 into 1's

Reverse cones



Bending • End Finishing • Tooling
for tube and pipe fabricators