



Working With Stainless Steel

Stainless Steel, being a hard material, utilizes more of your machine's power and exerts more force on your tooling. Due to this, HUTH has developed tooling for use with Stainless.

Expanding tooling

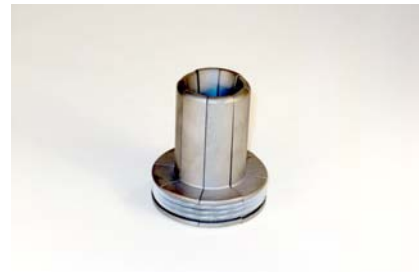
The 572 and 573 Arbors are used with the 472 thru 478 segment sets.



572 Arbor
1 3/8" ID to 1 3/4" ID
Comparable to 508 & 498



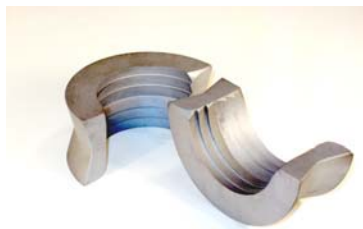
573 Arbor
1 3/4" ID to 4" ID
Comparable to 508 & 499



472 Segment Set
1 3/8" ID to 1 3/4" ID
Comparable to 473

Clamping Collets

HUTH's new design of clamping collets holds 304 Stainless.



New Design
1700 Series Collets